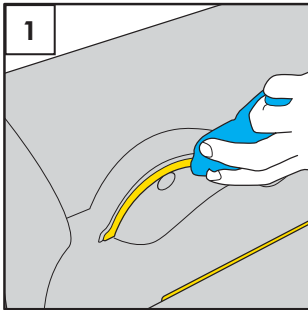
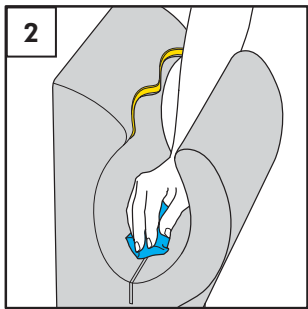


dyson airblade

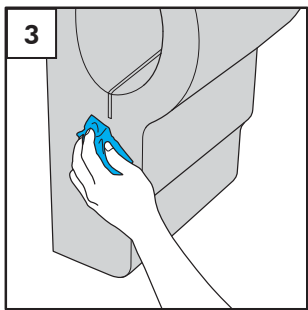
Cleaning should be performed at least daily or as part of the washroom cleaning regime using a cloth or soft brush.



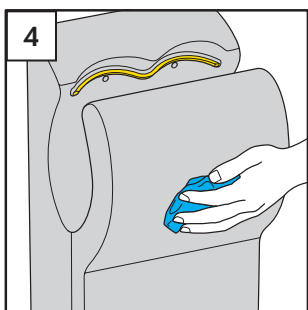
1
Clean the edges of the air slots.



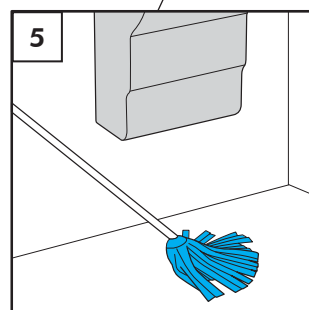
2
Particular attention should be paid to the seals.



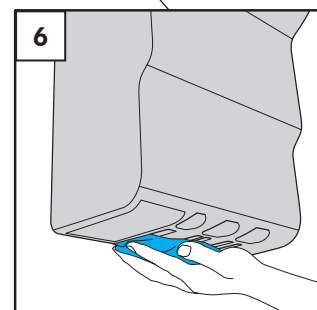
3
Clean the sides of the machine.



4
Wipe all surfaces with a soft cloth and non abrasive cleaner.



5
Clean the floor beneath and around the machine.



6
Clean the air inlet on base REGULARLY.



DO NOT USE BLEACH OR ABRASIVE CLEANERS