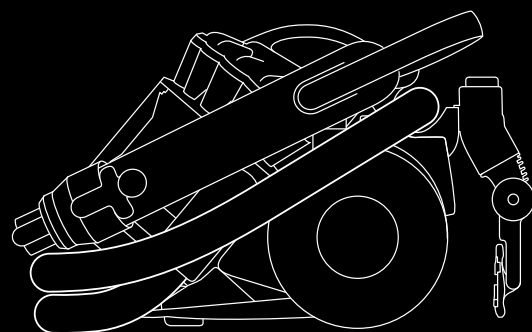


dyson baby

DC  
22 allergy



# 5 year guarantee

On cylinder and upright vacuums.  
Parts and labour guaranteed by  
Dyson for 5 years.

Ensure you register for your  
5 year guarantee today.



## ONLINE

Just visit

[www.dyson.com/register](http://www.dyson.com/register)

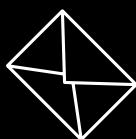


## PHONE

7 days a week

**UK 0800 298 0298**

**IRL 01 475 7109**



## MAIL

Complete and return the  
free post registration form

After registering for your 5 year guarantee, your Dyson vacuum cleaner will be covered for parts and labour for 5 years from the date of purchase, subject to the terms of the guarantee.

If you have any query about your Dyson, call the Dyson Customer Helpline with your serial number and details of where/when you bought the cleaner. Your serial number can be found on your rating plate which is behind the clear bin™.

Most queries can be solved over the phone by one of our trained Helpline staff. If your machine needs attention, we'll aim to send one of our Dyson engineers to fix it within 3 working days. We won't keep you waiting around either; our engineers can visit a home or work address – wherever is most convenient for you.



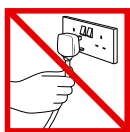
Note your serial number for future reference

## ⚠ GENERAL SAFETY PRECAUTIONS ⚠

READ ALL INSTRUCTIONS BEFORE USING THIS VACUUM CLEANER

When using an electrical appliance, basic precautions should always be followed, including the following:

- 1 This machine is for domestic use only. **Do not** use outdoors or on wet surfaces.
- 2 **Do not** handle plug or appliance with wet hands.
- 3 **Do not** use with damaged cable or plug. If the supply cable is damaged, it must be replaced by Dyson Ltd, our service agent or similarly qualified persons in order to avoid a hazard.
- 4 If the vacuum cleaner is not functioning properly, has been dropped, damaged, left outdoors, or immersed in liquid, **do not** use, contact the Dyson Helpline.
- 5 **Do not** use the cleaner if any parts appear to be faulty, missing or damaged.
- 6 Ensure all parts including the clear bin™ are securely attached before use or carrying the machine.
- 7 This appliance is not intended for use by persons (including children) with reduced physical, sensory or mental capabilities, or lack of experience and knowledge, unless they have been given supervision or instruction concerning use of the appliance by a person responsible for their safety. Children should be supervised to ensure that they **do not** play with the appliance.
- 8 **Do not** leave appliance when plugged in. Unplug from outlet when not in use, and before performing user maintenance, connecting or disconnecting the hose or changing accessories.
- 9 Store the machine indoors. Put the vacuum cleaner away after use with the cable recoiled safely, to prevent tripping hazards.
- 10 If the machine overheats it will cut-out; it must be switched off, unplugged and allowed to cool down before attempting to check filters or for blockages.
- 11 **Do not** unplug by pulling on cable. To unplug, grasp the plug, not the cable.
- 12 **Do not** pull or carry by cable, use cable as a handle, close a door on cable, or pull cable around sharp edges or corners. **Do not** run appliance over cable. Keep cable away from heated surfaces.
- 13 The use of an extension cable is not recommended.
- 14 Keep hair, loose clothing, fingers, and all parts of body away from openings and moving parts, such as the brushbar.
- 15 **Do not** put any object into openings. **Do not** use with any opening blocked.
- 16 Take extra care when vacuuming on stairs; **do not** work with the vacuum cleaner above you on the stairs.
- 17 Keep the vacuum cleaner on the floor. **Do not** put the vacuum cleaner on chairs, tables etc.
- 18 **Do not** shake the machine or press the cyclone release button while carrying the machine.
- 19 **Do not** use to pick up flammable or combustible liquids, such as petrol, or use in areas where they may be present.
- 20 **Do not** pick up anything that is burning or smoking, such as cigarettes, matches, or hot ashes.
- 21 Check to ensure your electricity supply corresponds to that shown on the rating plate. The vacuum cleaner must only be used as rated.
- 22 Use only as described in this manual. Use only Dyson recommended attachments.
- 23 **Do not** use without clear bin™ and filters in place.
- 24 **Do not** lubricate any parts, or carry out any maintenance or repair work other than that shown in this manual, or as advised by the Dyson Helpline.



**Do not** pull on the cable.



**Do not** store near heat sources.



**Do not** use near naked flame.



**Do not** run over the cable.



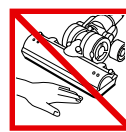
**Do not** pick up water or liquids.



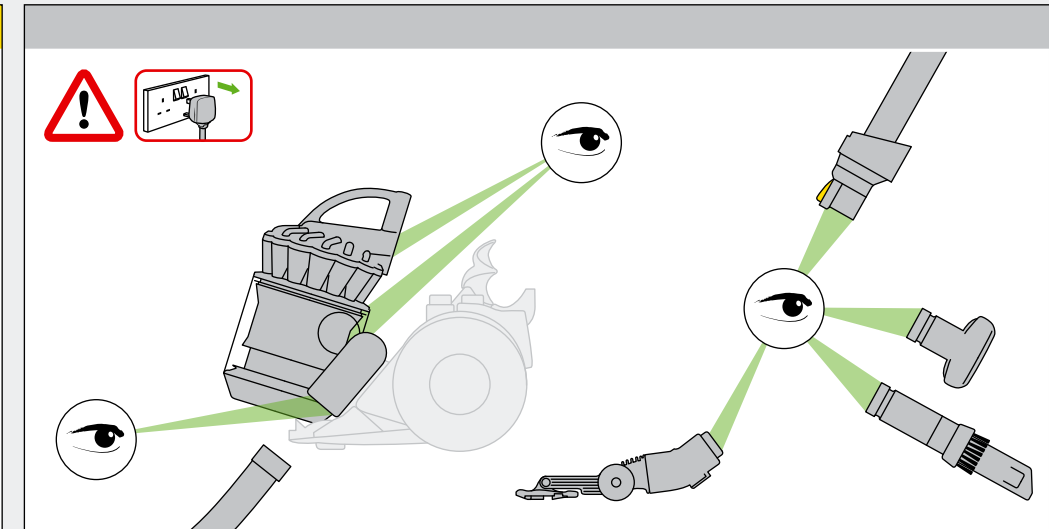
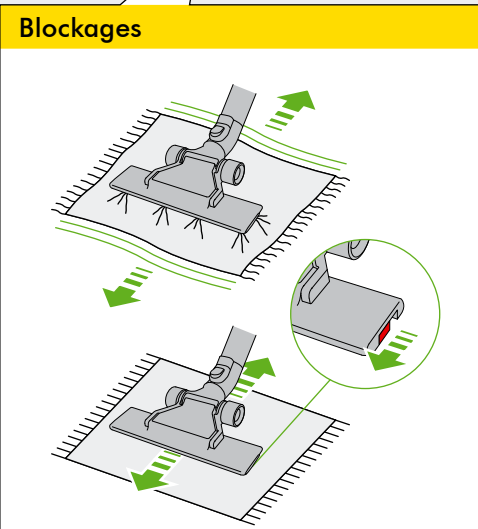
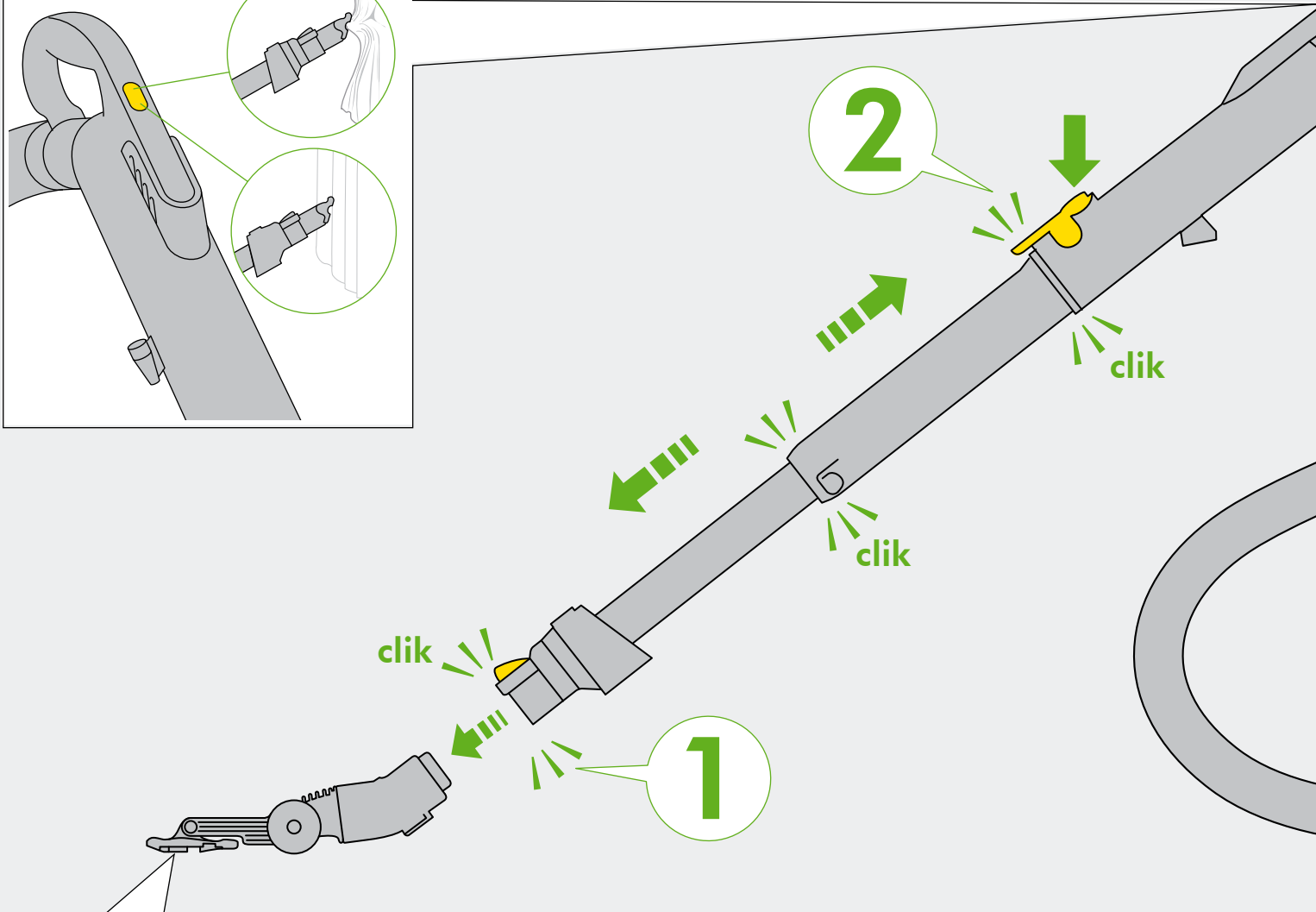
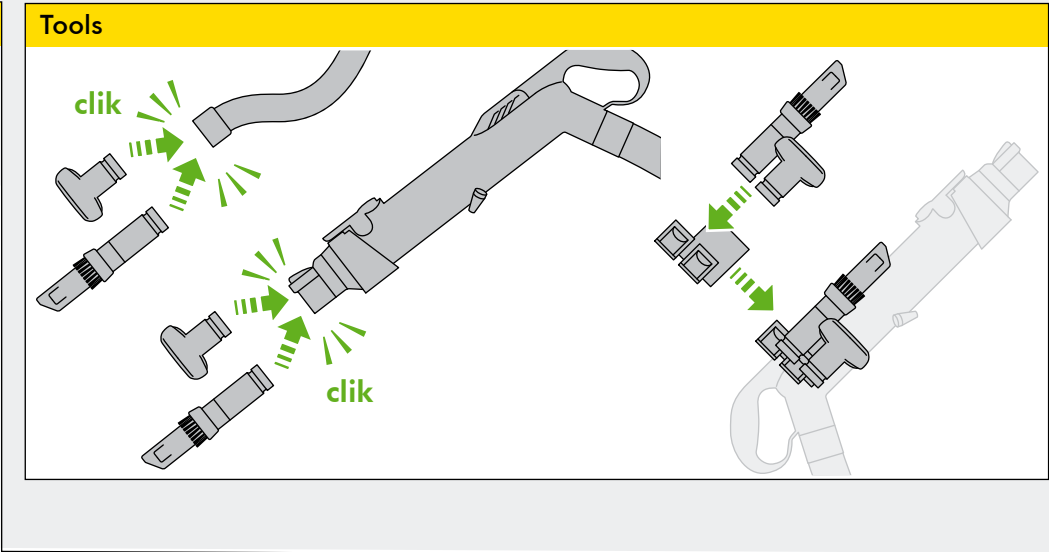
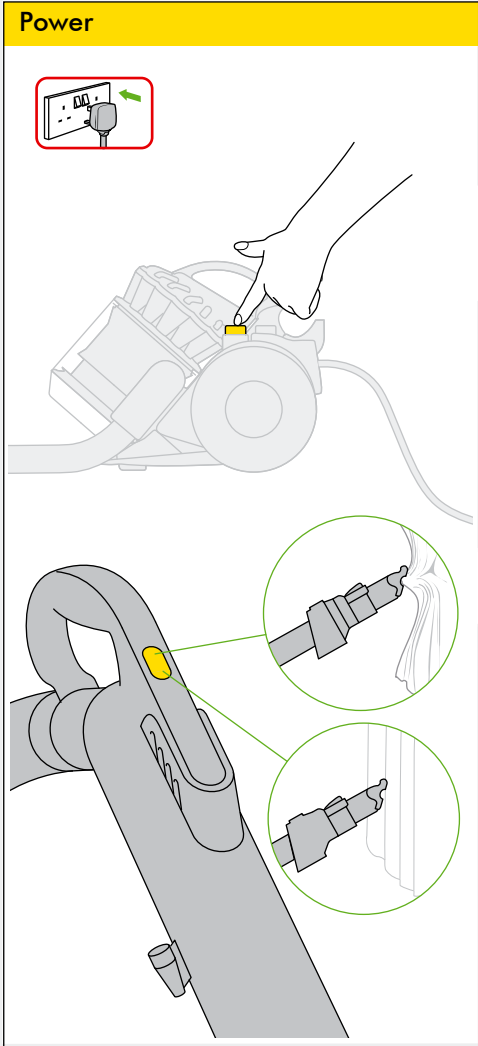
**Do not** pick up burning objects.



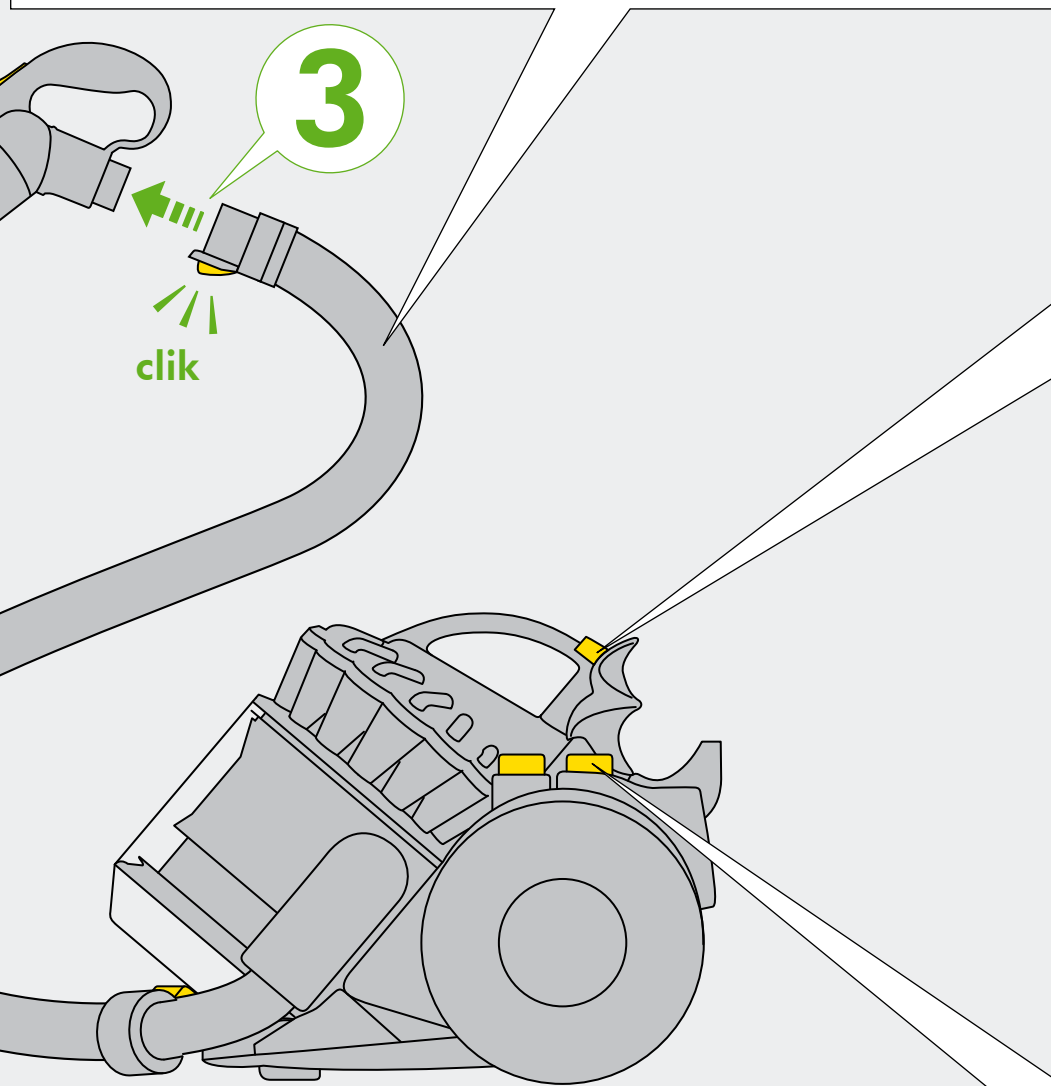
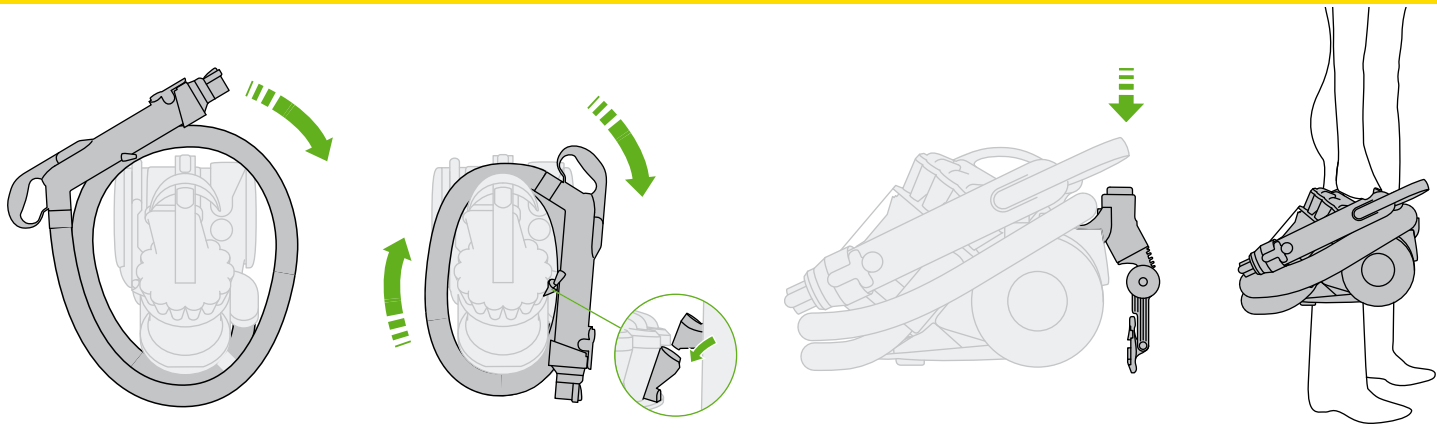
**Do not** use above you on the stairs.



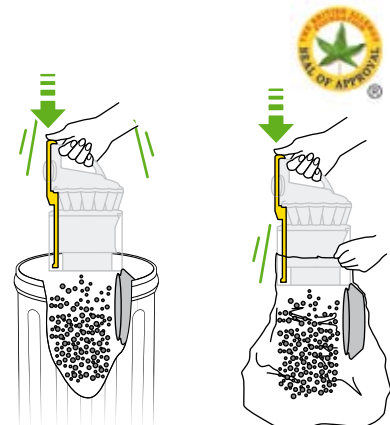
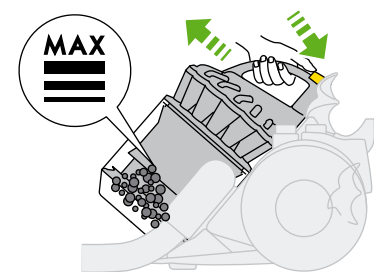
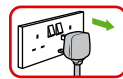
**Do not** put hands near the brushbar when the cleaner is in use.



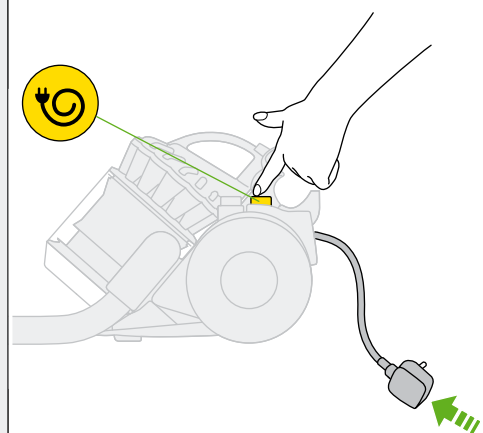
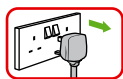
## Storage



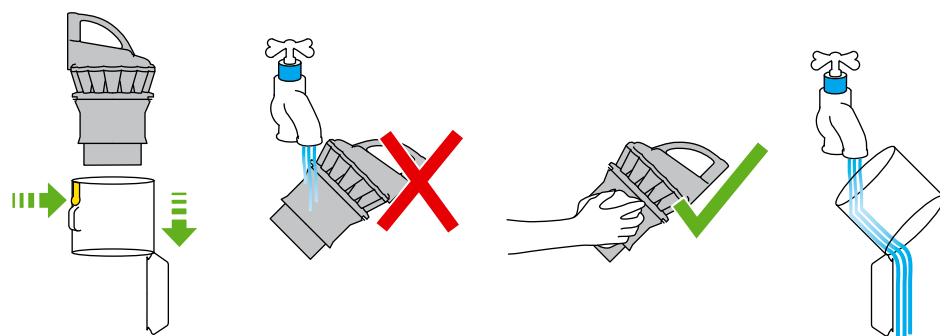
## Emptying



## Cable



## Cleaning

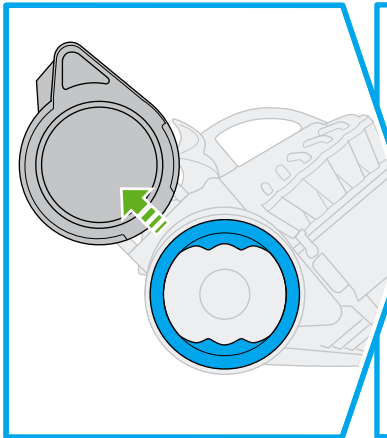
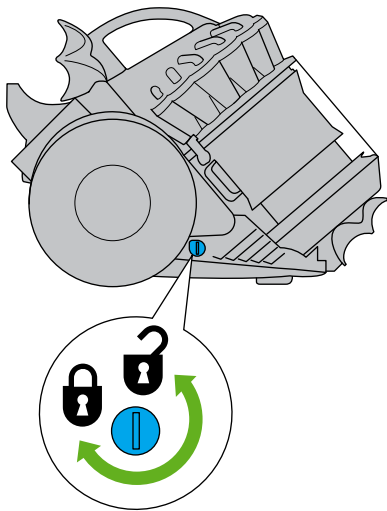


# IMPORTANT!

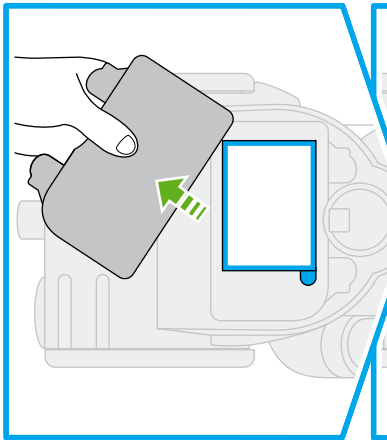
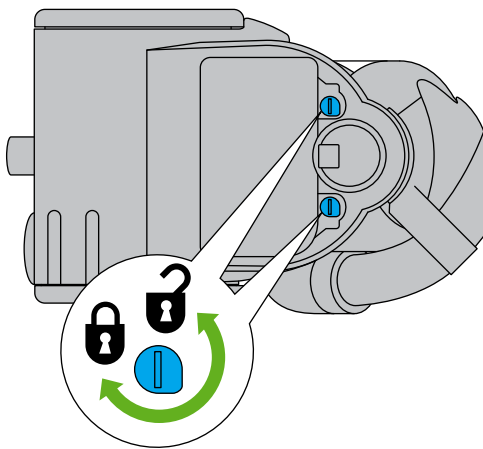
## WASH FILTERS



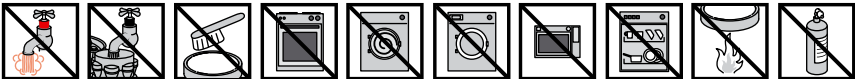
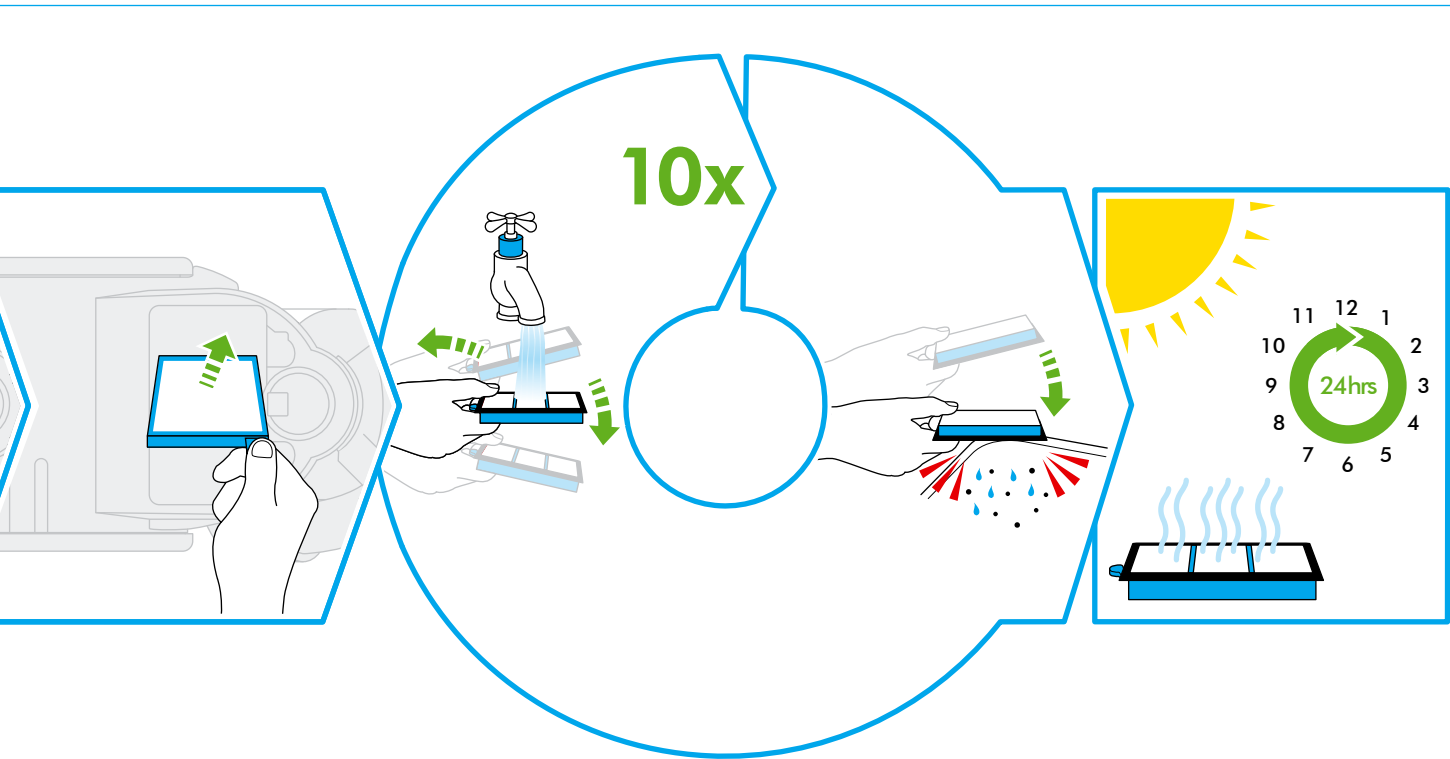
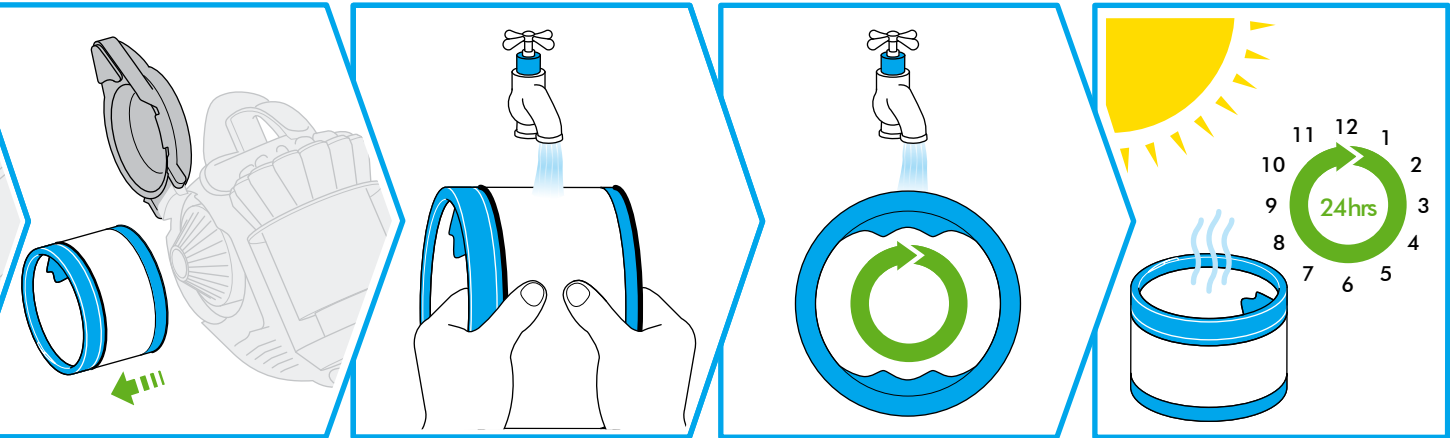
Filter **A**



Filter **B**



Wash filters with cold water at least every month.



# USING YOUR DYSON

Please note:

- (i) Fine dust such as plaster or flour should only be vacuumed in very small amounts.
- (ii) Consult your flooring manufacturer's recommended instructions before vacuuming and caring for your flooring, rugs and carpets.
- (iii) If used in a garage for car cleaning, care should be taken to wipe the soleplate and wheels with a dry cloth after vacuuming to clean off any sand, dirt, or pebbles which could damage delicate floors.
- (iv) When vacuuming, certain carpets may generate small static charges in the clear bin™. These are entirely harmless and are not associated with the mains supply. To minimise any effect from this, do not put your hand or insert any object into the clear bin™ unless you have first emptied it and rinsed it out with cold water.

## Emptying the Clear bin™



Caution:

- (i) Switch off machine and unplug before emptying the bin.  
Empty as soon as the dirt reaches the level of the MAX mark – do not overfill. To remove the clear bin™ from the machine press the button at rear of carrying handle. To release the dirt, press the button again to open the bin. The British Allergy Foundation has approved this product. It is a UK national charity with the aim of improving awareness, prevention and treatment of allergies. The British Allergy Foundation Seal of Approval is a UK-registered trademark.

Please note:

- (i) **Do not** use the machine without the clear bin™ in place.

## Cleaning the Clear bin™



Caution:

- (i) **Do not** immerse the whole cyclone in water or pour water into the cyclones.
- (ii) Ensure bin is completely dry before replacing.

Please note:

- (i) **Do not** use detergents, polishes or air fresheners to clean the bin.  
**Do not** put bin in a dishwasher.

## Washing your filters



Caution:

- (i) Switch 'OFF' and unplug before removing the filters.
- (ii) Ensure filters are completely dry before refitting to machine.

This machine has two filters, located as shown. It is important to check your filters regularly and wash at least every month according to instructions, to maintain performance.

Filter B should be rinsed and tapped out until the water runs clean, then tapped out again to ensure all excess water is removed. This will normally require up to 10 rinse cycles. Please leave to dry completely for 24 hours.

Please note:

- (i) The filters may require more frequent washing if vacuuming fine dust.
- (ii) **Do not** use detergents to clean the filters.
- (iii) **Do not** put the filters in the dishwasher, washing machine, tumble dryer, oven, microwave or near an open flame.



# Looking for blockages



Caution:


- (i) Switch 'OFF' and unplug machine before checking for blockages.
- (ii) Beware of sharp objects when clearing blockages.
- (iii) Refit all parts of the machine securely before using.

Please note:

- (i) Clearing blockages is not covered by your machine's limited warranty. If any part of your machine becomes blocked, it may overheat and then automatically shut off. Unplug machine and leave to cool down. Clear blockage before restarting.

## European conformity information.

A sample of this product has been tested and found to be in conformity with the following European directives: 2006/95/EC Low Voltage Directive, 2004/108/EC EMC Directive, 1999/5/EC R&TTE directive, 93/68/EEC CE Marking Directive.

The symbol  on the product or on its packaging indicates that this product should not be treated as household waste. Instead it should be handed over to the applicable collection point for the recycling of electrical and electronic equipment – this may be your local civic amenity site or a facility provided by the retailer selling the product or a replacement product. By ensuring this product is disposed of correctly, you will help prevent potential negative consequences for the environment and for human health, which could otherwise be caused by inappropriate waste handling of this product. For more detailed information about recycling of this product, please contact the Dyson helpline, your local authority civic amenity site or the retailer selling the product or a replacement product.

Please note: Small details may vary from those shown.

Product information:

Product weight 7.2kg, 230-240V, 50Hz, maximum power 1100W.

This product is protected by the following intellectual property rights:

Patent/Patent Application numbers:

AU 637272; EP 0636338; JP 1948863; US 5,078,761; AU 697029; EP 0800360; JP 3449723; US 5,893,936; AU 736843; EP 1087688; JP 3550360; AU 2001240894; EP 1268076; JP 2003-528704; US 6,835,222; AU 2002226556; CA 2,439,250; EP 1370172; JP 2004-528876; US 6,991,666; AU 744408; EP 1361812; JP 2004-537336; US 7,278,181; AU 2003252873; CA 2,449,304; EP 1380247; JP 2004-100960; US 7,168,128; AU 2002233553; CA 2,439,247; EP 1365676; JP 2004-524097; US 2004-0078925; AU 2002225232; CA 2,438,079; EP 1361815; JP 3940082; US 6,974,488; JP 2007-152136; GB 2407022; JP 2004-023962; AU 2003-255837; EP 1551270; GB 2392827; JP 2004-023963; US 2004-023963; EP 1576719; GB 2396491; JP 2006-511186; US 2006-0132081; EP 1542574; EP 1664560; GB 2406146; JP 2007-506053; US 2007-230839; EP 1680858; JP 2007-506398; US 2007-0194637; AU 2005243851; CA 2,564,599; EP 1748848; GB 2413974; JP 2007-508967; US 2007-0175189; AU 2005244379; CA 2,566,071; EP 1748718; GB2413941; JP 2007-510099; US 2007-0226937; AU 2005243454; CA 2,566,406; EP 1748719; GB 2413942; JP 2007-512311; US 11/596,174; US 11/794,227; GB 2426726; WO 2006/125945; GB 2426473; WO 2006/125946;

Designs/Design applications

AU 301268, ED 217666-0001, GB 3016553; JP 1228173; US D518933; AU 301393; ED 241930-0001; GB 3017293; JP 1236657; US D526102; AU 301396; ED 241930-0002; GB 3017294; JP 1236658; US D537219; AU 301394; ED 241930-0003; GB 3017295; JP 1236659; US D519,696; AU 314889; GB 4000251; JP 1311067; ED 701701-0001.

Equivalent patents, registered designs and applications exist in other countries.





# IMPORTANT!

## WASH FILTERS



Wash filters with cold water at least every month.



### Dyson Customer care

If you have a question about your Dyson vacuum cleaner, call the Dyson Helpline with your serial number or contact us via the Dyson website. The serial number can be found on the main body of the machine behind the clear bin™.

**GB Dyson Customer care**  
**service@dyson.co.uk**  
**0800 298 0298**

Dyson Ltd, Tetbury Hill, Malmesbury, Wiltshire SN16 0RP

**IRL Dyson Customer care**  
**www.dyson.ie**  
**01 475 7109**

Dyson Ireland Limited, Unit G10, Grants Lane,  
Greenogue Business Park, Rathcoole, Dublin 24